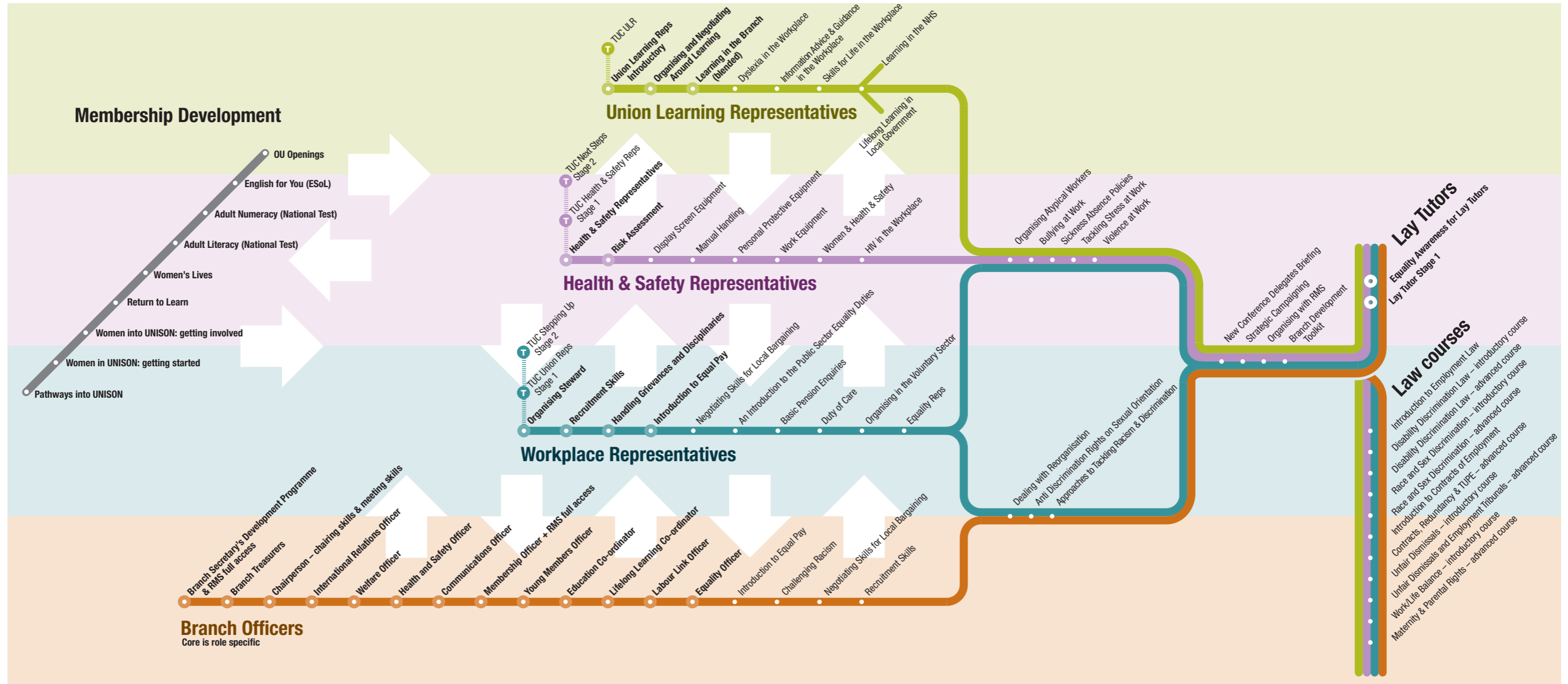


U-Train

UNISON routes to learning for representatives and members



- Key**
- Core course in bold
 - ⓘ TUC courses
 - Optional courses

➔ Arrows indicate the possibilities of moving between roles. If you are interested in taking up any of the positions in UNISON you can easily move from one to another

This map has been designed to guide you as a UNISON member or rep through a range of development opportunities available to you. Help in planning your development is available from your branch or union learning representative. If you do not have details of your branch contact UNISON on 0845 355 0845 for help.

The map sets out the full range of courses available through UNISON. UNISON recognises that our reps need certain skills and knowledge to do their job. U-Train shows you the training routes available to you to develop those skills and knowledge. Core courses, and more besides, are provided by every region. Although

the names of the courses may differ from region to region they will all give you the skills you need to carry out your role as a UNISON rep. Check your regional education service for more details. All representatives courses are free to the UNISON member although there may be a charge to your branch.

As a **member** or representative there are training courses available to help you learn new skills for your work and personal life and to give you the confidence to have more influence in the union and take on an active role. Some of these courses are free; others are offered at a discount for you as a UNISON member.

Each **representative** route contains foundation courses shown as **core** ● which are a recommended starting point when you are first appointed. After that, you can choose from the **optional** • courses in your own route or from another one, depending on your needs. Another option after your initial Core course would be to follow the **TUC pathway** ⓘ.

Branch officer courses are available for whichever role you carry out. You might also find it useful to complete courses from another option area.

To take up the **lay tutor** route you would usually have experience of activism within your branch and

a desire to contribute to the development of new UNISON representatives.

To find out more about how to apply for these courses contact your branch or region.

